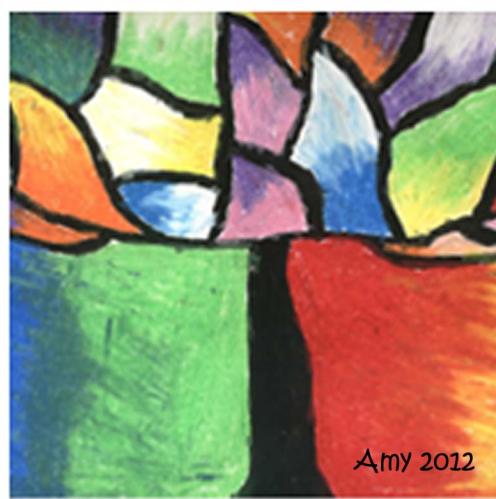


# Tree Silhouettes with Colorful Skies

3rd Grade



## Materials Needed:

Display My Art drawing paper, pencil, brightly colored magic markers (or craft/acrylic paint), black magic marker (or craft/acrylic paint).

## Instructions:

1. DRAWING TREE SILHOUETTE: LIGHTLY in pencil, have child draw outline of tree trunk and split the trunk from one section flowing into two or three thicker sections. Have them color these trunks in solid black magic marker. Draw smaller branches extending from the larger sections (also with solid black magic marker)
2. CREATING COLORFUL SKY BACKGROUND: Have the children each pick 5 or 6 different colors that they will be using for the background. Have the child section off the background (all around the black tree silhouette) and color in each section with the different colors of magic markers that they chose. The branches of the tree should help to create the shapes. The shapes can be abstract, with wavy lines or more defined straight lines. The key is to make sure ALL white space is covered and different colors are used. Try to make each section similar in size so that not one section of the background is all one color. They can follow different color schemes for the background if they wish.
3. DON'T FORGET TO PUT STUDENT NAME AND YEAR ON THE DRAWING, at least one inch away from outside border.